



# INDOFINE Chemical Company, Inc.

121 Stryker Lane, Bldg. 30, Suite 1 • Hillsborough, NJ 08844 • U.S.A.

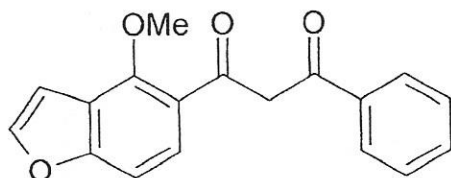
Phone: (908) 359-6778 • FAX: (908) 359-1179

website: [www.indofinechemical.com](http://www.indofinechemical.com)

e-mail: [chemical@indofinechemical.com](mailto:chemical@indofinechemical.com)

## CERTIFICATE OF ANALYSIS

<u>Catalog Number:</u>	P-006
<u>Product:</u>	<b>PONGAMOL</b>
<u>CAS Number:</u>	[484-33-3]
<u>Lot Number:</u>	1504582
<u>Chemical Formula:</u>	C <sub>18</sub> H <sub>14</sub> O <sub>4</sub>
<u>Molecular Weight:</u>	294.31
<u>Melting Point:</u>	125-127°C
<u>Appearance:</u>	Off-white crystalline powder
<u>Moisture(KF):</u>	0.5%
<u>Solubility:</u>	Soluble in chloroform
<u>TLC:</u>	Hexane:Ethyl acetate (8:2)
<u>NMR Spectrum:</u>	Enclosed (conforms to the structure)
<u>Storage:</u>	Store in a cool, dry place. Protect from light.
<u>Purity(HPLC):</u>	99.15%





# INDOFINE Chemical Company, Inc.

121 Stryker Lane, Bldg. 30, Suite 1 • Hillsborough, NJ 08844 • U.S.A.

Phone: (908) 359-6778 • FAX: (908) 359-1179

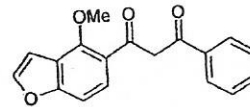
website: [www.indofinechemical.com](http://www.indofinechemical.com)

e-mail: [chemical@indofinechemical.com](mailto:chemical@indofinechemical.com)

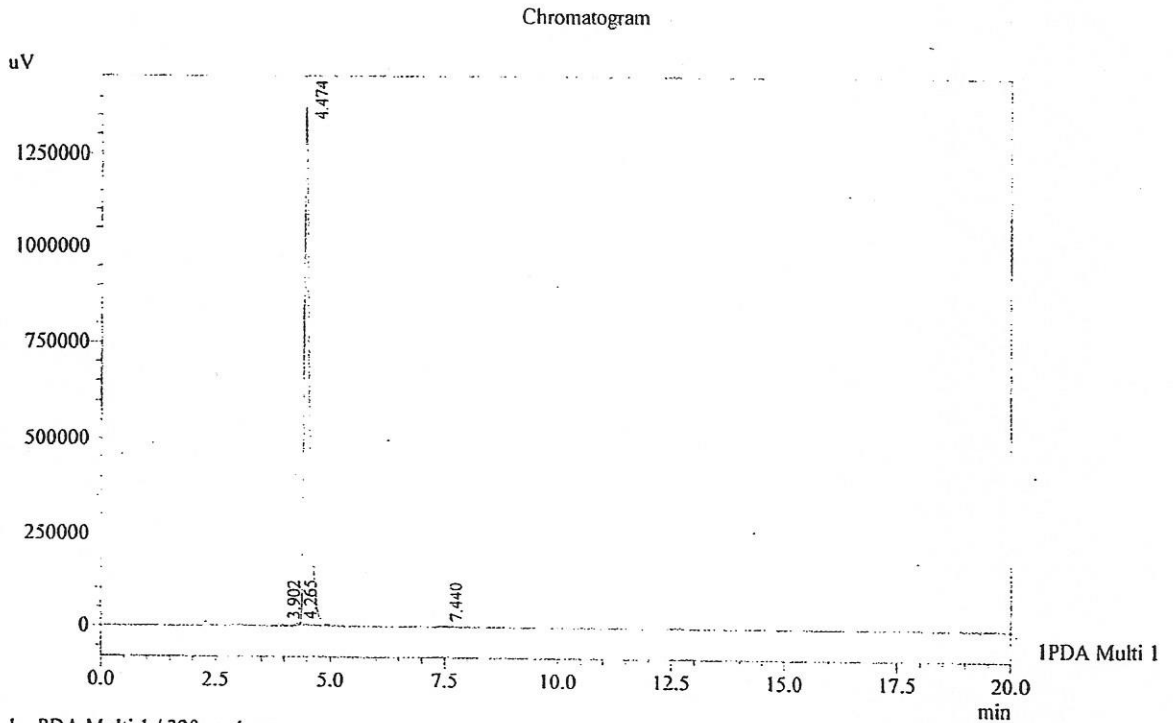
## HPLC ANALYSIS

Acquired by : Admin  
 Sample Name : Pongamol  
 Sample ID : 625 gm  
 Injection Volume : 20 uL  
 Data Filename : 200115C.lcd  
 Method Filename : Linear Isocratic.M.lcm

Catalog No.: P-006  
 Product Name: Pongamol  
 Lot No.: 1504582



Column : Gemini C-18, (250mm x4.6mm 5.0µ)  
 Flow : 2.000 mL/min.  
 Mobile Phase : A(20% of Water) B(80% of Acetonitrile)



I PDA Multi 1 / 320nm 4nm

PeakTable

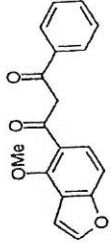
PDA Ch1 320nm 4nm

Peak#	Name	Ret. Time	Area	Area %	Relative Retention Time
1	RT:3.902	3.902	42791	0.40	0.87
2	RT:4.265	4.265	22954	0.21	0.95
3	Pongamol	4.474	10640640	99.15	1.00
4	RT:7.440	7.440	25302	0.24	1.66
Total			10731688	100.00	



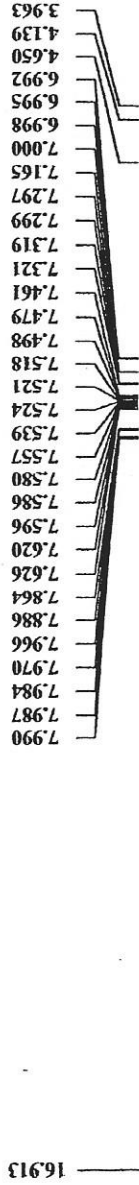
INDOFINE Chemical Company, Inc.  
121 STRYKER LANE  
BLDG. 30, SUITE 1  
HILLSBOROUGH, NJ 08844

Catalog No.: P-006  
Product Name: Pongamol  
Lot No.: 1504582

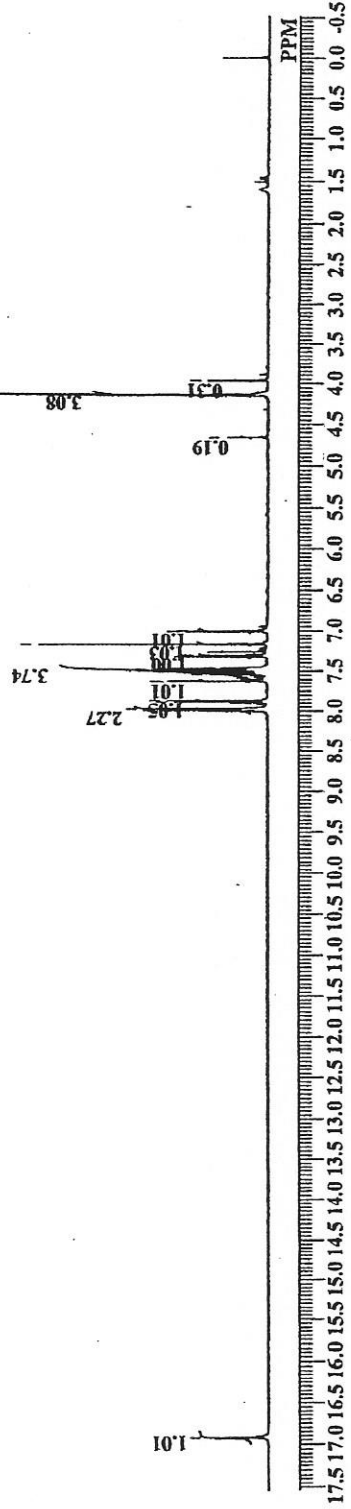


PGML-625 1H NMR CDC13

Analysed By: KNR



PGML-625 1H.als  
PGML-625 1H NMR CDC13  
DATIM Mon Jan 19 19:09:52 2015  
1H  
NON  
EXMOD  
OBFRQ 399.65 MHz  
OBSET 124.00 KHz  
OBFIN 10500.00 Hz  
POINT 32768  
FREQU 11994.00 Hz  
SCANS 16  
ACQTM 2.7320 sec  
PD 2.0000 sec  
PW1 5.50 usec  
IRNUC 1H  
CTEMP 21.4 c  
SLVNT CDCL3  
EXREF 0.00 ppm  
BF 0.30 Hz  
RGAIN 15





# INDOFINE Chemical Company, Inc.

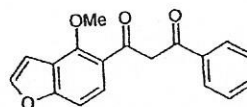
121 Stryker Lane, Bldg. 30, Suite 1 • Hillsborough, NJ 08844 • U.S.A.

Phone: (908) 359-6778 • FAX: (908) 359-1179

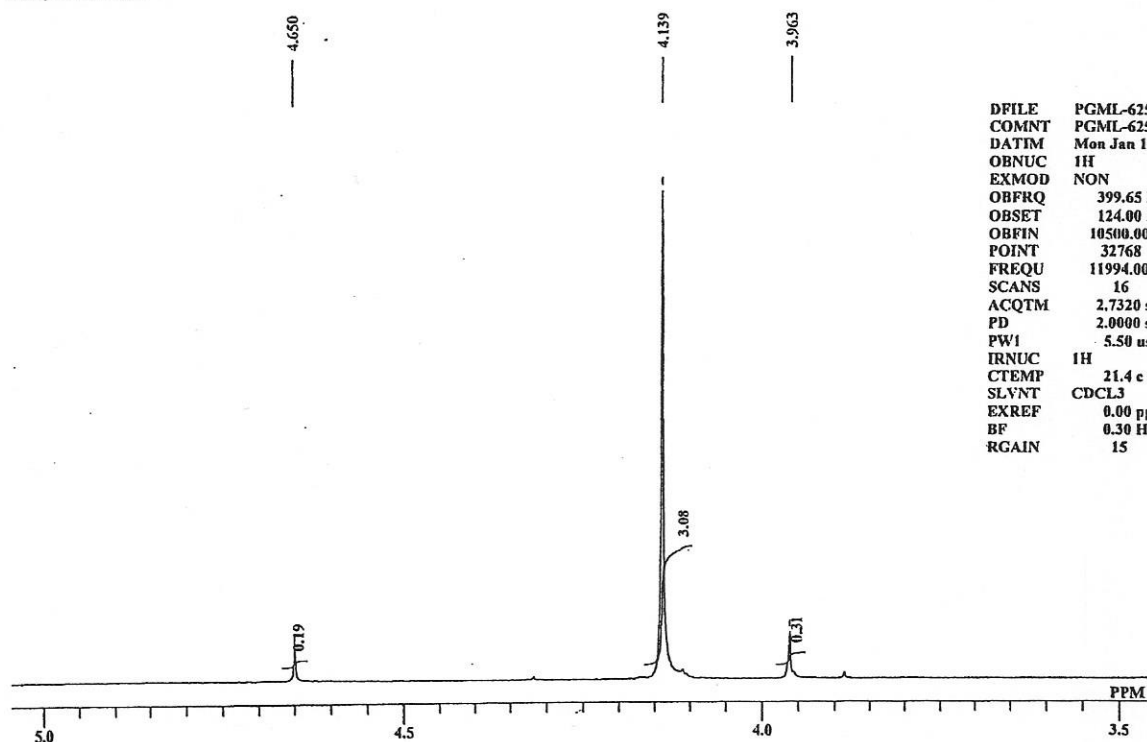
website: [www.indofinechemical.com](http://www.indofinechemical.com)

e-mail: [chemical@indofinechemical.com](mailto:chemical@indofinechemical.com)

Catalog No.: P-006  
Product Name: Pongamol  
Lot No.: 1504582



PGML-625 1H NMR CDCl3  
Analysed By : KNR



DFILE	PGML-625 1H.a1s
COMNT	PGML-625 1H NMR CDCl3
DATIM	Mon Jan 19 19:09:52 2015
OBNUC	1H
EXMOD	NON
OBFRQ	399.65 MHz
OBSET	124.00 KHz
OBFIN	10500.00 Hz
POINT	32768
FREQU	11994.00 Hz
SCANS	16
ACQTM	2.7320 sec
PD	2.0000 sec
PW1	5.50 usec
IRNUC	1H
CTEMP	21.4 c
SLVNT	CDCL3
EXREF	0.00 ppm
BF	0.30 Hz
RGAIN	15



# INDOFINE Chemical Company, Inc.

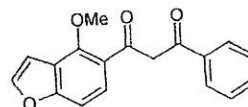
121 Stryker Lane, Bldg. 30, Suite 1 • Hillsborough, NJ 08844 • U.S.A.

Phone: (908) 359-6778 • FAX: (908) 359-1179

website: [www.indofinechemical.com](http://www.indofinechemical.com)

e-mail: [chemical@indofinechemical.com](mailto:chemical@indofinechemical.com)

Catalog No.: P-006  
Product Name: Pongamol  
Lot No.: 1504582



PGML-625 1H NMR CDCl3

Analysed By : KNR

